

Solución Modelo de Examen, Lecto III CIM, Febrero 2019

Parte Escrita

I

A)

Do2 Do3 Sol3 Do4 Mi4 Sol4 Sib4 Do5 Re5 Mi5

B)

Do6 Do5 Fa4 Do4 Lab3 Fa3 Re3 Do3 Sib2 Lab2

II

Triadas

1)

A) MibM

B) Mi m

C) Fa# m

2)

A) Mi d

B) La# d

C) Fa# d

Tetradas

1)

A) Fa 7

B) Sol d7m

C) Do# d 7m

2)

A) Mim7

B) Do m7

C) Re m7

III  
1

1)

A) **Do Mixolidio**

2)

A) **Sol Lidio**

B) **Do Eolico**

B) **Sol Locrio**

C) **Mi Eolico**

C) **La Locrio**

2

4)

m    m    M    M    m    d    M

Acorde Caracteristico    Acorde Caracteristico    Acorde Caracteristico

5)

m    d    M    m    m    M    M


Acorde Caracteristico

6)

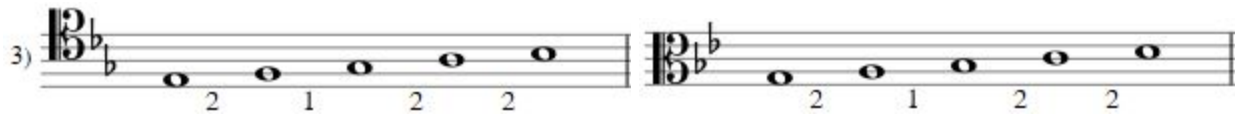
m    M    M    m    d    M    m

Acorde Caracteristico    Acorde Caracteristico    Acorde Caracteristico

IV

1) 

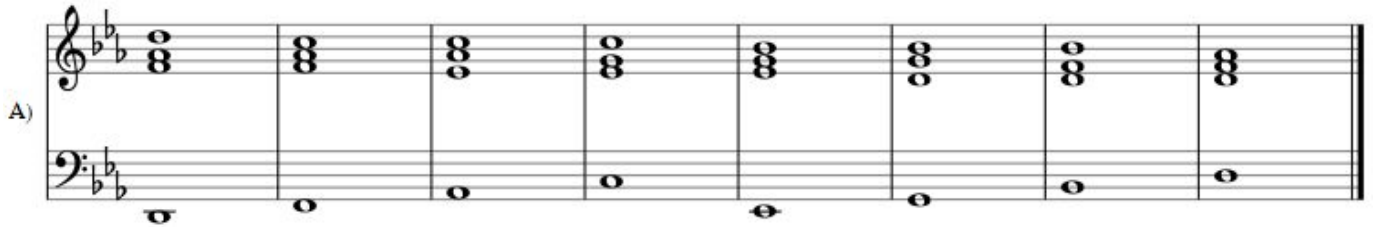
2) 

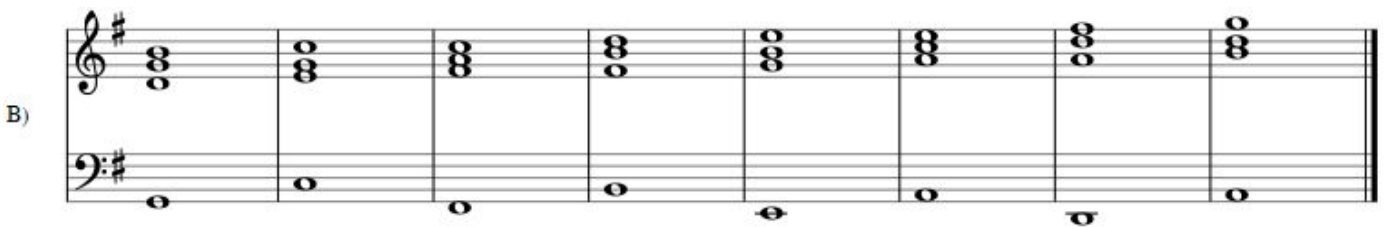
3) 

4) 

5) 

V

A) 

B) 

Dictado, Hoja del Profesor

I

A)

1) 

2) 

3) 

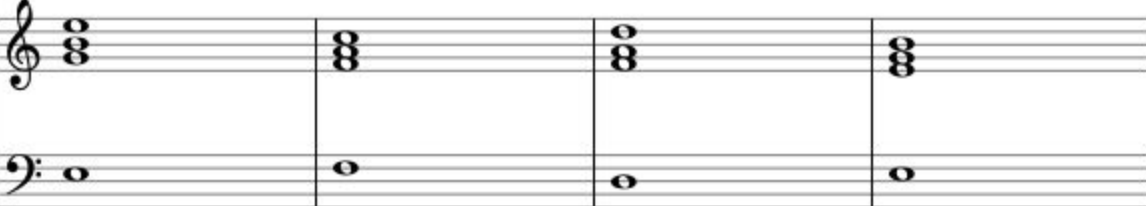
B)

1) 

2) 

3) 

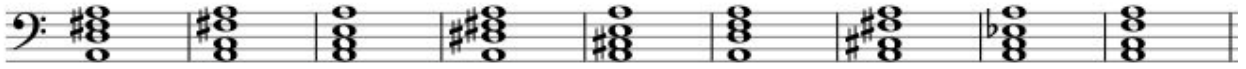
II

1) 

2) 

3) 

III



Dictado, Hoja del Estudiante

**I**

A)

1. Mi4
2. Sib4
3. Re5

B)

1. Fa3
2. Lab2
3. Re3

**II**

1. Mim-FaM-Rem-Mim
2. FaM-SolM-DoM-FaM
3. Rem-FaM-SolM-Rem

**III**

1. M5
2. d3
3. m1
4. d5
5. M1
6. m5
7. m3
8. d1
9. M3

Prueba Individual

II

A)

Exercise II A) consists of two staves. The upper staff is in treble clef with a key signature of one sharp (F#). It contains eight measures of chords: F#m, Gm, Am, Bm, C#m, Dm, Em, and F#m. The lower staff is in bass clef with a key signature of one sharp (F#). It contains eight measures of single notes: F#, G, A, B, C#, D, E, and F#.

B)

Exercise II B) consists of two staves. The upper staff is in treble clef with a key signature of two flats (Bb, Eb). It contains eight measures of chords: Bbm, Ebm, Fm, Gm, Abm, Bbm, Cbm, and Ebm. The lower staff is in bass clef with a key signature of two flats (Bb, Eb). It contains eight measures of single notes: Bb, Eb, F, G, Ab, Bb, Cb, and Eb.

III

A)

Exercise III A) is a single staff in bass clef. It contains three measures of eighth-note patterns. The first measure is labeled "Lam" and has a fermata over the final note. The second measure is labeled "Fa#m" and has a fermata over the final note. The third measure is labeled "Rem" and has a fermata over the final note.

B)

Exercise III B) is a single staff in bass clef. It contains two measures of eighth-note patterns. The first measure is labeled "La d7m" and has a fermata over the final note. The second measure is labeled "Fa# d7m" and has a fermata over the final note.

Exercise III C) is a single staff in bass clef. It contains two measures of eighth-note patterns. The first measure is labeled "Re# d7m" and has a fermata over the final note. The second measure is labeled "Fa# d7m" and has a fermata over the final note.